



Cable ID: UTP CAT5E PVC CCA

Date / Time: 07/31/2023 03:21:01 PM

Headroom 9.7 dB (NEXT 36-45)

Test Limit: TIA Cat 5e Channel

Cable Type: Cat 5e U/UTP

NVP: 69.0%

Operator: Your Name

Software Version: 2.7700

Limits Version: 1.9400

Calibration Date:

Main (Tester): 05/13/2015

Remote (Tester): 05/13/2015

Test Summary: PASS

Model: DTX-1800

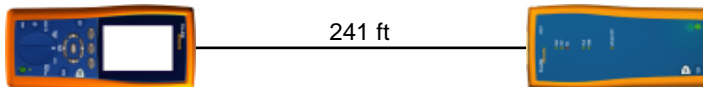
Main S/N: 9890001

Remote S/N: 9890002

Main Adapter: DTX-PLA002

Remote Adapter: DTX-PLA002

Length (ft), Limit 328	[Pair 45]	241
Prop. Delay (ns), Limit 555	[Pair 12]	365
Delay Skew (ns), Limit 50	[Pair 12]	9
Resistance (ohms)	[Pair 78]	21.5
Insertion Loss Margin (dB)	[Pair 12]	4.4
Frequency (MHz)	[Pair 12]	100.0
Limit (dB)	[Pair 12]	24.0

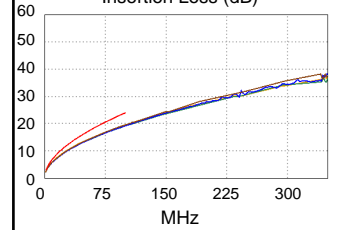


Wire Map (T568B)

PASS

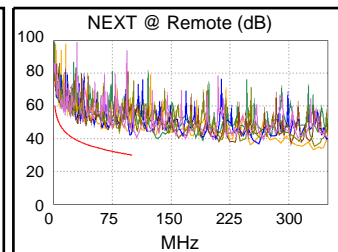
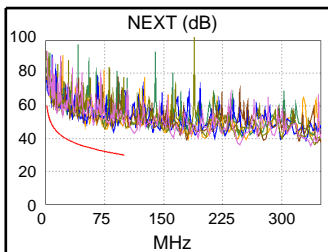


Insertion Loss (dB)

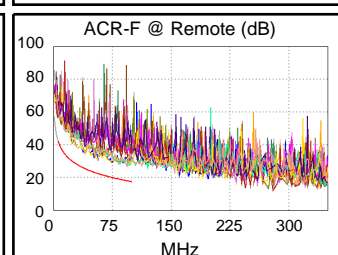
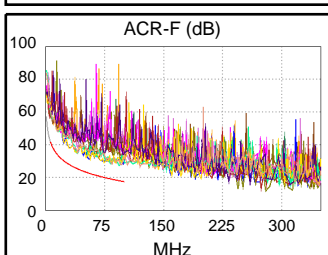


Worst Case Margin Worst Case Value

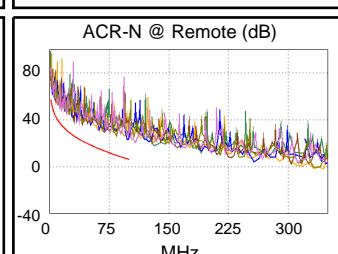
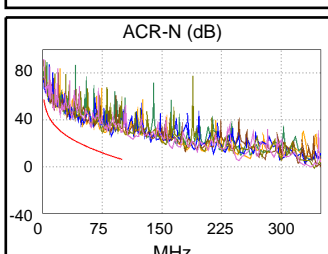
PASS	MAIN	SR	MAIN	SR
Worst Pair	12-78	36-45	12-78	12-78
NEXT (dB)	10.8	9.7	13.0	11.8
Freq. (MHz)	1.9	30.5	86.3	98.0
Limit (dB)	58.9	38.9	31.2	30.2
Worst Pair	45	12	36	78
PS NEXT (dB)	12.0	11.6	13.7	12.3
Freq. (MHz)	14.4	7.3	77.3	98.3
Limit (dB)	41.4	46.3	29.0	27.2



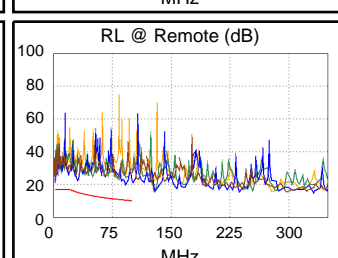
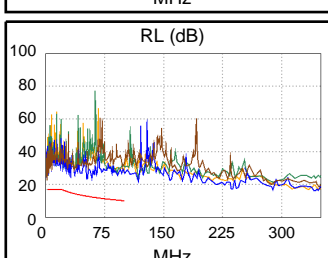
PASS	MAIN	SR	MAIN	SR
Worst Pair	12-78	78-12	45-78	78-45
ACR-F (dB)	8.5	8.5	8.8	8.8
Freq. (MHz)	55.3	55.3	94.0	93.8
Limit (dB)	22.6	22.6	17.9	18.0
Worst Pair	78	78	78	78
PS ACR-F (dB)	8.8	9.5	10.5	10.3
Freq. (MHz)	40.3	84.0	94.0	96.8
Limit (dB)	22.3	15.9	14.9	14.7



N/A	MAIN	SR	MAIN	SR
Worst Pair	12-78	12-78	12-78	12-78
ACR-N (dB)	11.2	11.7	17.0	16.2
Freq. (MHz)	1.9	3.8	86.5	98.0
Limit (dB)	55.8	49.7	9.0	6.5
Worst Pair	12	12	12	78
PS ACR-N (dB)	12.6	12.4	19.0	16.8
Freq. (MHz)	2.3	7.3	86.8	98.3
Limit (dB)	51.3	40.3	5.9	3.4



PASS	MAIN	SR	MAIN	SR
Worst Pair	45	45	45	45
RL (dB)	10.4	6.7	10.4	9.4
Freq. (MHz)	52.5	30.3	52.5	91.8
Limit (dB)	12.8	15.2	12.8	10.4



Compliant Network Standards:

10BASE-T	100BASE-TX	100BASE-T4
1000BASE-T	ATM-25	ATM-51
ATM-155	100VG-AnyLan	TR-4
TR-16 Active	TR-16 Passive	